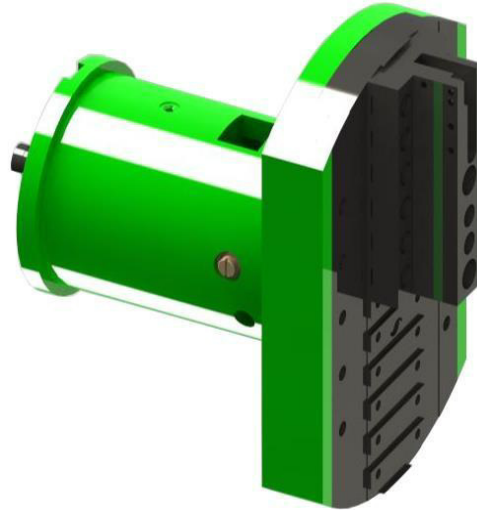


VWD 500 / 630 – FACING HEAD:



The VWD 500 / 630 Facing Head is attached to the hollow spindle of horizontal boring machines. The Facing head is identical for all types of the machines with exception of the mount and the taper shank. Movement of the tool position is carried out by the digital read out, feed of the slide is selected from the panel of the machine.

The Facing head performs operations such as Facing, Boring, Grooving, Contouring and Taper Boring etc., This Facing Head can perform as a NC Facing Slide when mounted on a CNC Horizontal Boring machine with independent movement of Ram & Spindle.

VWD 500 / 630 – FACING HEAD	Description
Maximum Diameter of Boring	150 – 1500 MM
Maximum Travel of Slide	120 MM
Maximum Torque	6000 NM
Speed	100 RPM

IN ORDER PLEASE STATE:

- 1. Denomination and model of milling head.**
- 2. Basic length of extension mount required.**
- 3. Model and serial No. of machine for which the milling head is required.**
- 4. Taper in main spindle of machine.**